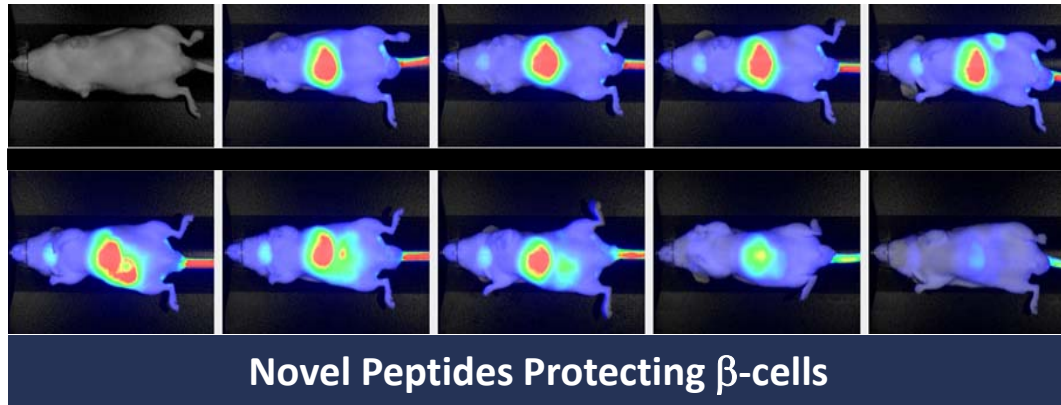


Follicum

Tissue Repair Peptides



June 2020

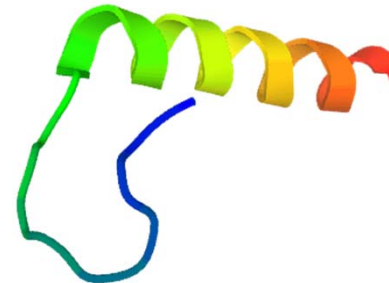
Disclaimer

- This report contains certain forward-looking statements based on uncertainty, since they relate to events and depend on circumstances that will occur in future and which, by their nature, will have an impact on the results of operations and the financial condition of Follicum AB. Such forward-looking statements reflect the current views of Follicum AB and are based on the information currently available to the company. Follicum AB cannot give any assurance as to the correctness of such statements.
- There are a number of factors that could cause actual results and developments to differ materially from those expressed or implied in these forward-looking statements. These factors include, among other things, risks or uncertainties associated with the success of future clinical trials; risks relating to personal injury or death in connection with clinical trials or following commercialization of the company's products, and liability in connection therewith; risks relating to the company's freedom to operate (competitors patents) in respect of the products it develops; risks of non-approval of patents not yet granted and the company's ability to adequately protect its intellectual property and know-how; risks relating to obtaining regulatory approval and other regulatory risks relating to the development and future commercialization of the company's products; risks that research and development will not yield new products that achieve commercial success; risks relating to the company's ability to successfully commercialize and gain market acceptance for Follicum's products; risks relating to the future development of the pricing environment and/or regulations for pharmaceutical products; risks relating to the company's ability to secure additional financing in the future, which may not be available on favourable terms or at all; risks relating to currency fluctuations; risks associated with technological development, growth management, general economic and business conditions; risks relating to the company's ability to retain key personnel; and risks relating to the impact of competition.

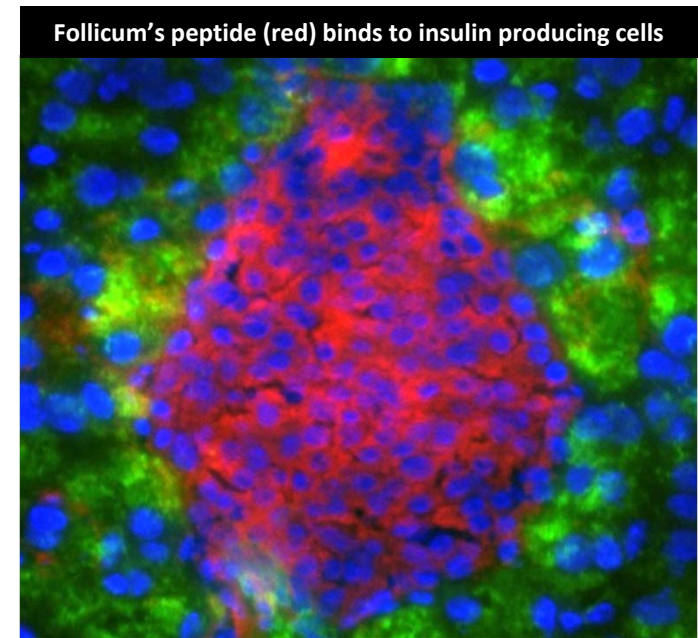
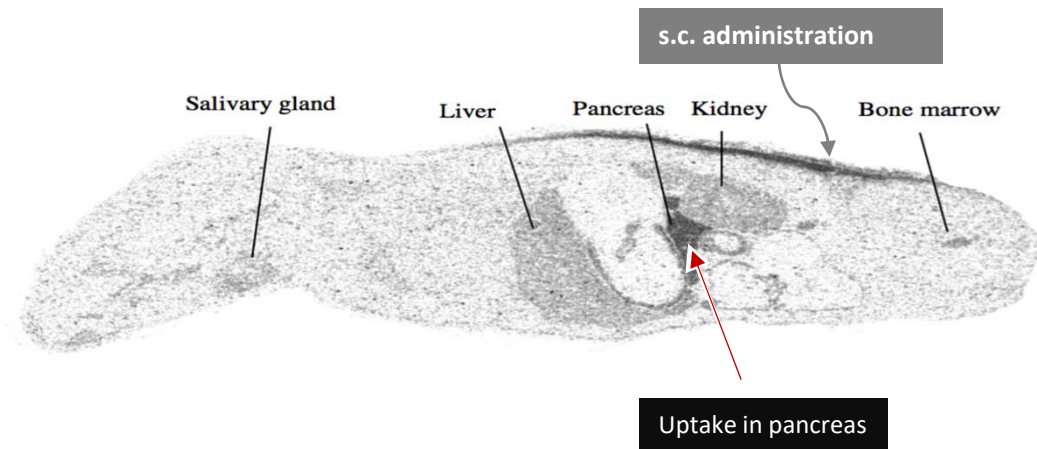
Tissue Repair Peptides

Peptides are an interesting source of new modern therapies and increasingly important in medicine

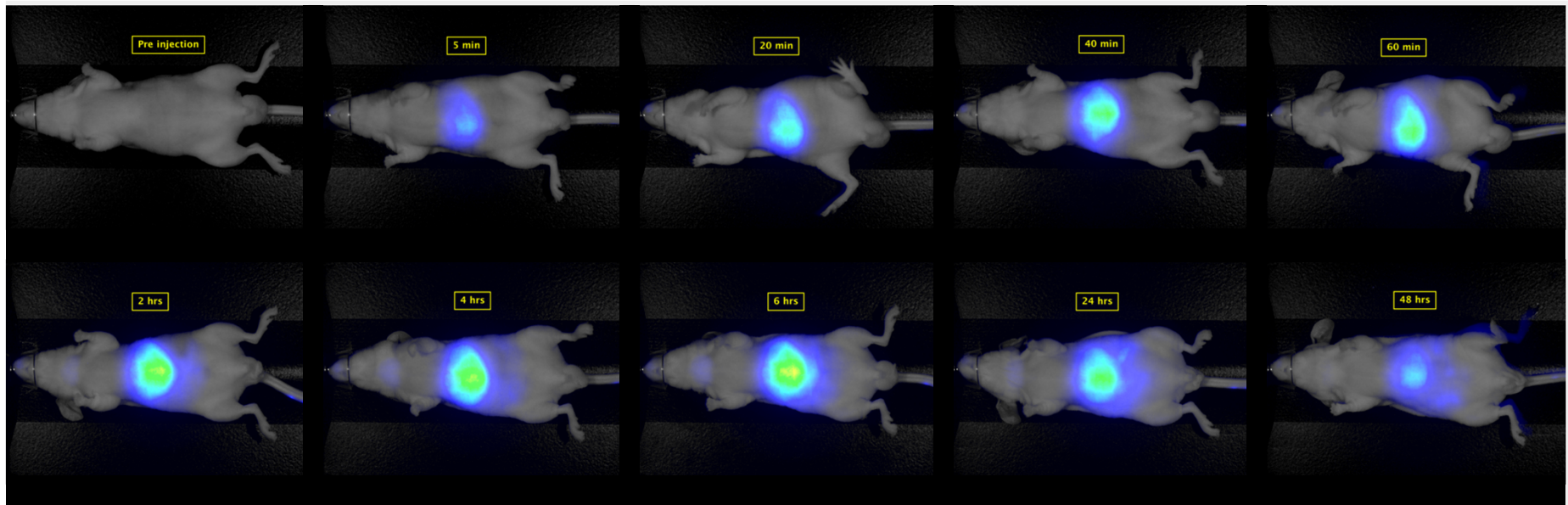
- Endogenous origin
- Disease specific
- Organ specific
- Generally regarded as safe



Follicum's Peptide Binds To Insulin Producing Cells

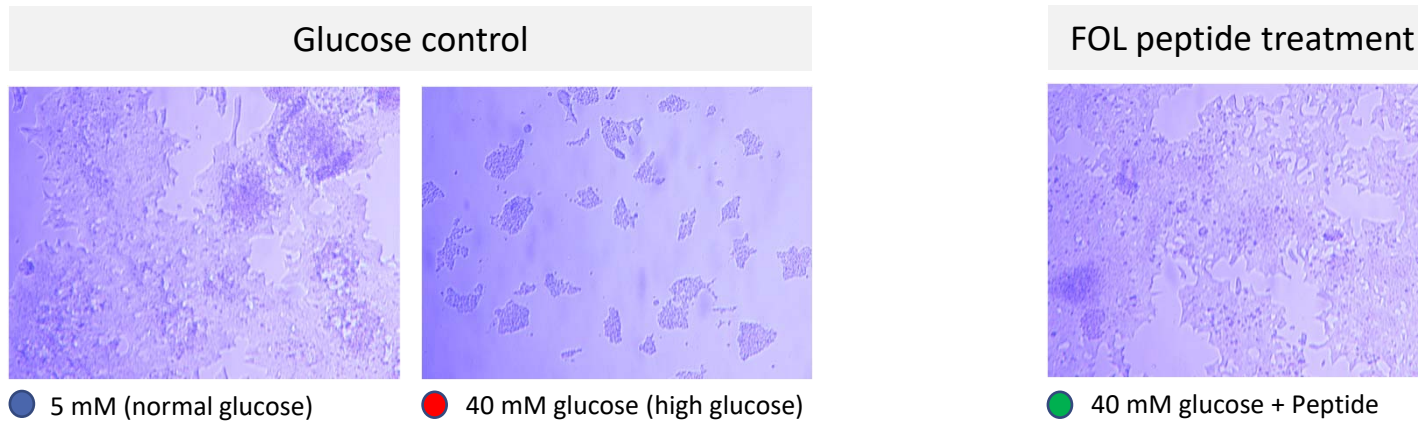


I.V. Administration of Cy7.5 Labelled Peptide



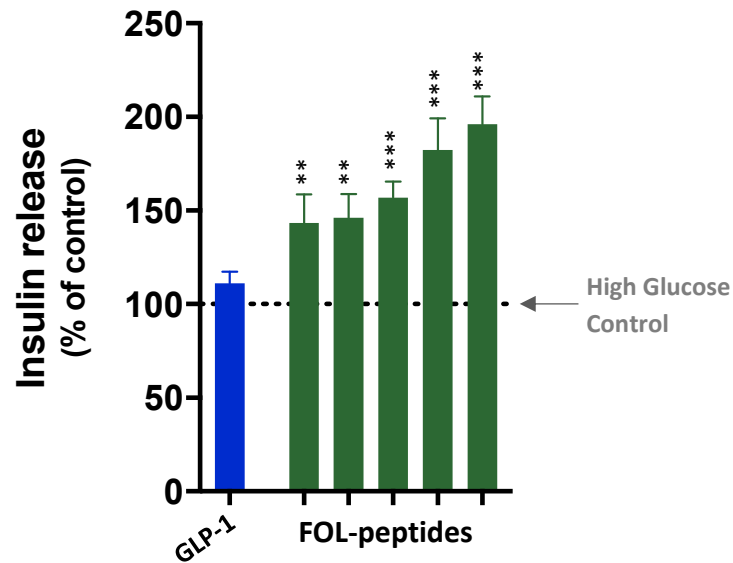
FOL-Peptide Protects β -cells Due to Glucotoxicity

INS-1E cells

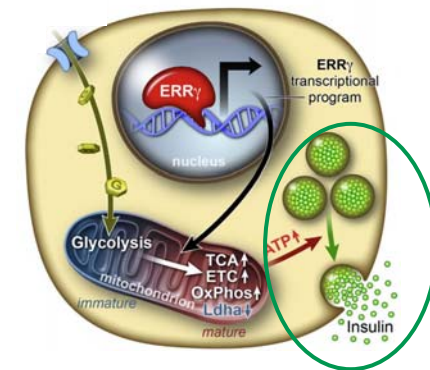


Representative pictures of cell-culture wells

FOL-Peptides Restores β -cell Function at Glucotoxic Conditions



- Follicum's peptides have a unique capacity to preserve β -cells
- Increased insulin secretion and insulin synthesis
- Decreased cell death
- Preservation of β -cell functionality can reduce diabetes & related complications



Rat INS-1 cells

Source: References (method) Nyblom HK et al. Proteomics. 2006;5193-8. Luo G, et al. Int J Biochem Cell Biol. 2013; 483-490.

BioBreeding (BB) Diabetes Prone (DR) lyp/lyp rats

At 50-70 days of age the rats are affected by a spontaneous and aggressive pancreatic islet β -cell destruction resulting in type 1 diabetes (T1D).

When peripheral T cell lymphopenia that is linked to a single nucleotide deletion in *Gimap5* (an anti-apoptotic protein) resulting in loss of *Gimap5* protein expression that is a prerequisite for onset of spontaneous T1D.

The model offers a unique opportunity to study therapies that could prevent β -cell destruction.



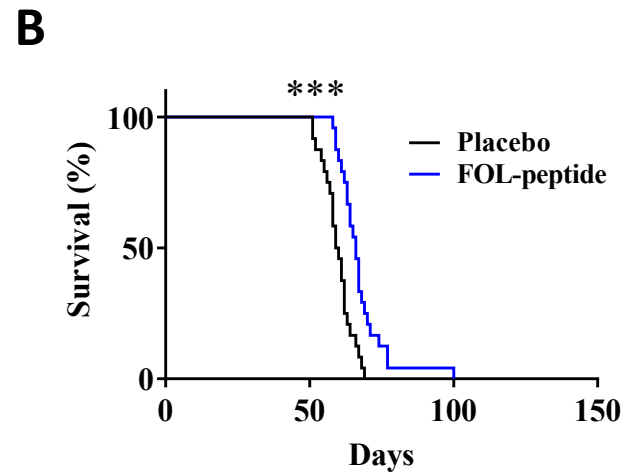
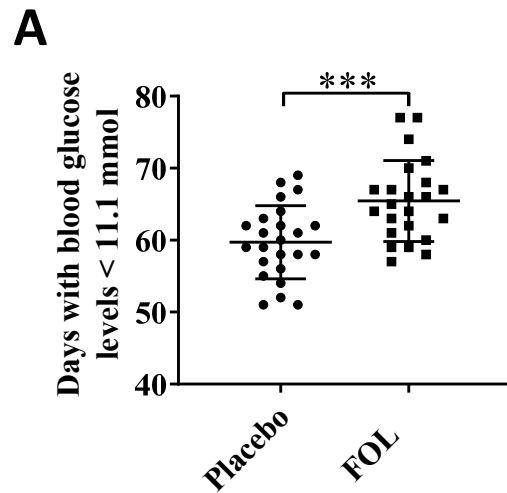
Åke Lernmark

Bild: Svenska Läkaresällskapet



FOL-Peptide Delay Onset of Type 1 Diabetes

FOL-Peptide, 3 times/week from day 40, significantly delayed onset of type 1 diabetes *in vivo*



Log-rank (Mantel-Cox) test
P<0.001
Gehan-Breslow-Wilcoxon test
P<0.001

BioBreeding (BB) lyp/lyp rats

In vivo: FOL-Peptide has Anti-Inflammatory Effects

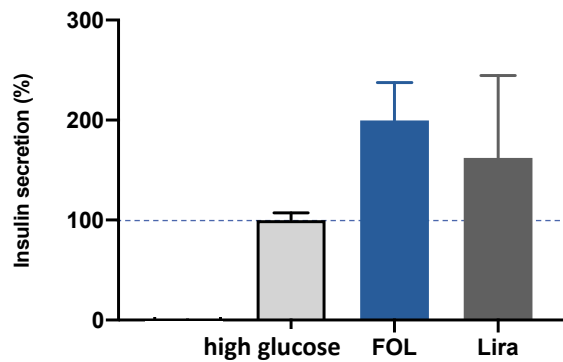
Method: BB rats are treated with FOL-peptides (or placebo) during 14 days. Immune cells are then challenged with LPS +/- peptides. Cytokine readout after 20h.

Results: FOL-Peptide treatment of BB rats **strongly inhibit pro-inflammatory cytokine** production from immune cells. These results could help to explain the results on β -cells protection and delayed onset of T1D.

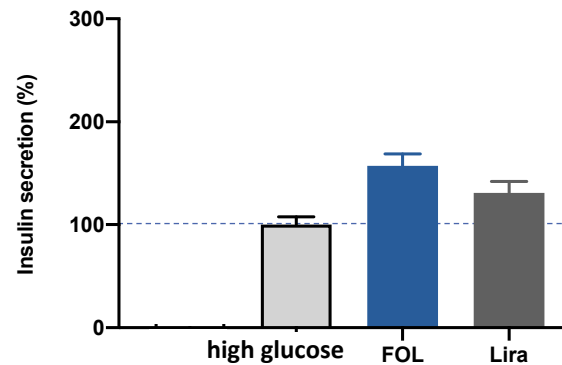


Human Pancreatic Islets Respond to FOL-Peptides

Non-diabetic



Severe Type 2 Diabetes



- Follicum's peptides on par with Liraglutide
- Evident effect in severe Type 2 diabetic patients
- Indication of improved β -cell response

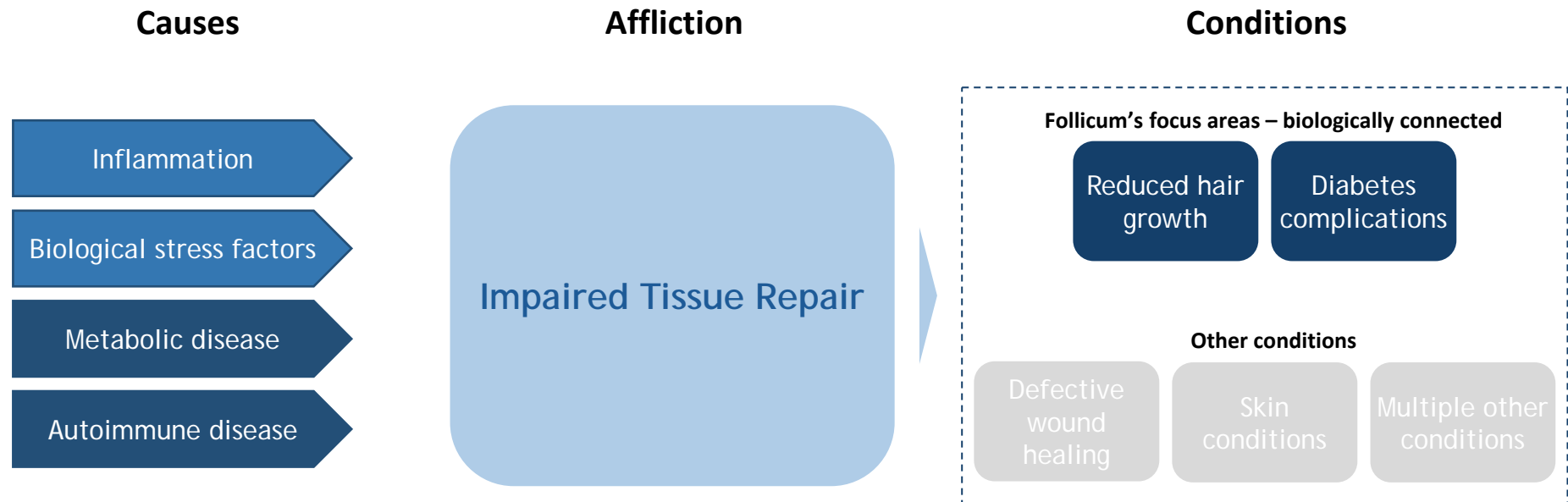
2-4 repeats/donor
Concentration: 100nM for both peptides

The logo for Follicum features the word "Follicum" in a blue, sans-serif font. The letter "l" is stylized with three vertical lines extending upwards from its top, resembling hair strands. The "o" is a simple circle, and the "i" is a simple vertical line. The "c" is a simple curve, and the "u" is a simple shape with a small tail. The "m" is a simple shape with two vertical stems and a curved top.

Follicum

Tissue Repair Peptides

Advanced Platform Technology – Tissue Repair Peptides





















Experienced Team in Developing Peptide-based Drugs

- Shareholder base includes experts such as Recipharm Ventures, also represented in the Board of Directors
- Management and Board of Directors has extensive experience from commercializing peptide-based drugs
- Diabetes collaboration including partners such as Novo Nordisk and Johnson & Johnson

Company Overview

Ticker / Exchange: FOLLI / Nasdaq Nordic Growth Market
Market Cap: SEK 134m¹

Management

 Jan Alenfall CEO	 Maria Ekblad R&D Director	 Gunnar Gårdemyr CBO	 Fredrik Werner CFO	 Susanne Schéele Project Manager
  	 	     	  	

Board of Directors

 Gun-Britt Fransson Chairman	 Mats Persson Director	 Carl-Johan Spak Director	 Lars H. Bruzelius Director	 Anna Hultgårdh Nilsson, Director	 Alejandra Mørk, Director
 	   	   			

#	Top 10 Shareholders ²	Value (SEKm)	Capital
1	Avanza Pension	12.27	9.12%
2	Recipharm Venture Fund AB	7.24	5.38%
3	Mats Paulssons Stiftelse För Forskning Innovation Samhällsbygg	6.37	4.73%
4	Brushamn Invest AB	5.57	4.14%
5	Nordnet Pensionsförsäkring	4.85	3.60%
6	Tibia Konsult AB	4.59	3.41%
7	Mats Invest AB	3.62	2.69%
8	Nordic Cross Asset Management	3.52	2.62%
9	Kudu AB	2.74	2.03%
10	Ekhaga Utveckling AB	1.85	1.37%

Total Number of Shareholders: 2 835

¹ Data as per 2020-05-28 (capitaliq.com)

² Data as per 2020-03-31 (holdings.se)

Company History – Key Events

Follicum AB is founded



2011

- Successful preclinical hair growth experiments

Collaboration with world leading researchers



2012

- Vinnova grant – SEK 500k
- Investments by Lund University Bioscience and Sunstone Capital



Listing on Spotlight Stock Market



2014

- Swedish fund ALMI award – SEK 50k
- Collaboration with Haifa University



Diabetes project start



2017

- Successful completion of phase I/II with FOL-005
- Diabetes financing from diabetes research partner Novo Nordisk Foundation



Unique topical formulation



2019

- Successful *in-vivo* study with FOL-005
- Diabetes Scientific Advisory Board
- Cooperation agreement with Bioglan
- Collaboration agreement with proDERM

