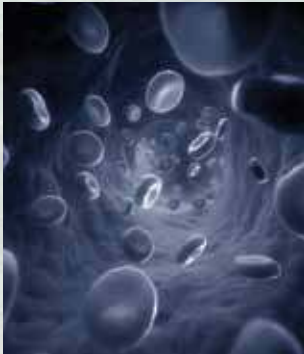


**EXTENSIVELY CHARACTERIZED
CELLS AVAILABLE IMMEDIATELY
OFF THE SHELF**



>90%

**AVERAGE LOT VIABILITY
AND PURITY POST-THAW**

- Optimize assay efficiency by starting from our cryopreserved cells with functionality comparable to fresh isolations
- Standardize test results in large lots of cells from a single donation with high survival and post-thaw recovery rates
- Find specific cell types needed for your research from our wide demographic selection
- Accelerate your studies by using the existing flow cytometry and ELISpot testing profiles available with our comprehensively characterized cells
- Custom processing and characterization studies offered to meet your exact needs

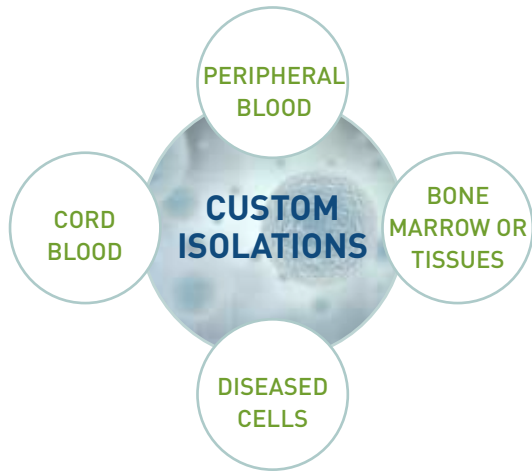
| DATA | EXAMPLE ONE | EXAMPLE TWO |
|-------------|---|---------------------|
| AGE | 21 | 51 |
| GENDER | Male | Female |
| ETHNICITY | Hispanic | Caucasian |
| HLA TYPE I | A26 | A01 |
| | A30 | |
| | B14 | B14 |
| | B56 | B41 |
| | C01 | C07 |
| HLA TYPE II | C08 | C17 |
| | DRB1 07:01 | DRB1 13:02 |
| | DRB1 11:04 | DRB1 13:03 |
| | DRB3 02:02 | DRB3 01:01 |
| | DRB4 01:01 | DRB3 03:02 |
| | DQB1 02:02 | DQB1 03:01 |
| CEF (SFC) | 13 – Low Response | 162 – High Response |
| CMV (SFC) | 701 – High Response | 41 – Low Response |
| PHA (SFC) | TNTC: Too Numerous To Count. Considered a High Response | 65 – Med Response |

SFC = SPOT FORMING CELLS
NO RESPONSE = 0 - 10 SFC
LOW RESPONSE = 11 - 50 SFC
MEDIUM RESPONSE = 51 - 100 SFC
HIGH RESPONSE = >100 SFC

All donor units are collected from an FDA regulated center and tested with FDA approved test kits for the following viruses:

- Hepatitis B Surface Antigen
- Syphilis (RPR)
- Anti-HIV-1/HIV-2
- HIV-1 RNA
- Hepatitis C RNA

SIMPLY TELL US YOUR DESIRED POPULATION AND WE WILL PROCESS, CHARACTERIZE AND ANALYZE FOR YOU. IT'S THAT EASY.



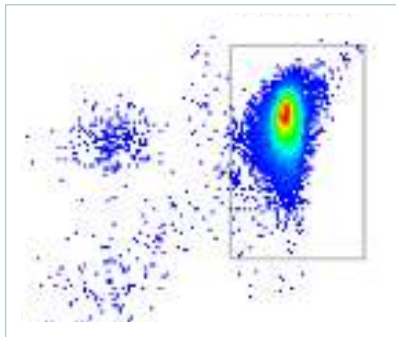
CUSTOM ISOLATIONS

- Cells purified from cord blood, peripheral blood or other sources such as bone marrow or tissues
- Highly purified PBMC or CBMNC Subsets such as Monocytes, T-cells or B-cells

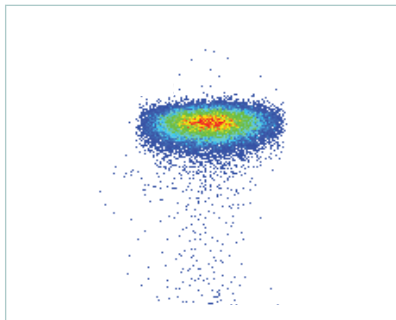
DISEASE STATE MATERIAL

- Wide variety of patient populations including those with infectious diseases, cancer and autoimmune disorders
- Highly annotated and superior quality human specimens for novel research solutions

CD4+ T-CELLS
98.3% PURE



CD14+ MONOCYTES
98.4% PURE



Immunophenotyping of CD4+ T-cells and CD14+ Monocytes showing greater than 98% purity using a 14-color flow cytometer

ENSURE RESEARCH CONTINUITY WITH OUR SPECIALIZED LABORATORY SERVICES FOR ASSAY DEVELOPMENT AND OPTIMIZATION

- Characterization assays – ELISA, ELISpot, HLA Type I and II
- Immunophenotyping - Flow cytometry analysis with up to 14 colors - for a single sample or for screening multiple samples
- Other immunoassays – intercellular cytokine staining and cytokine bead array
- Tissue culture – cell line expansion, EBV transformation, cell proliferation assays
- Nucleic acid extraction and quantitation
- Sample integrity assessment services to maximize utilization of biospecimens
- Custom analysis